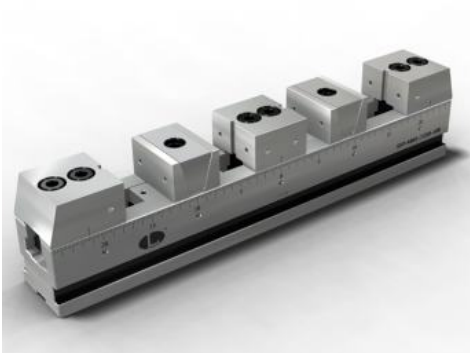
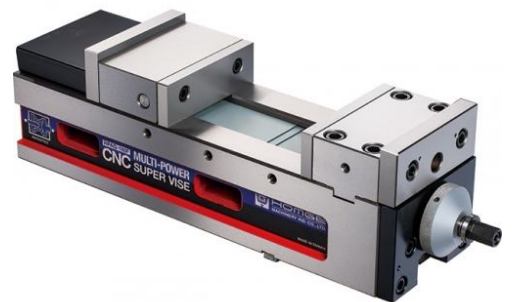
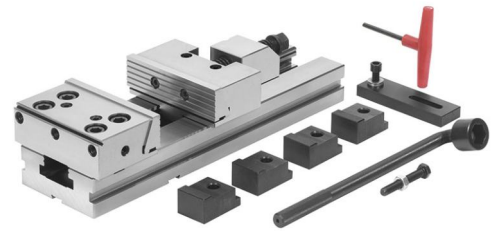


OUTLET

MORSE



ALLMATIC NC7-DUO 125

cod. ALLM 2022125



~~LISTINO € 3148~~

**PREZZO OUTLET
€ 1500**



**DISPONIBILE
ANCHE CUBO
CON 4 MORSE
USATE
USA 2252 / € 2500**

Clamping widths

ALLMATIC NC-DUO Type 2022

| Type | 90 | 125 |
|-----------------|----------------------|--------|
| Jaw arrangement | Clamping width in mm | |
| Situation S1 | 0-64 | 0-89 |
| Situation S2 | 31-95 | 40-129 |
| Situation S3 | 56-120 | 82-171 |

Machine axis in mm

| | | |
|-----|-----|-----|
| Y 1 | 256 | 331 |
| Y 2 | 306 | 417 |

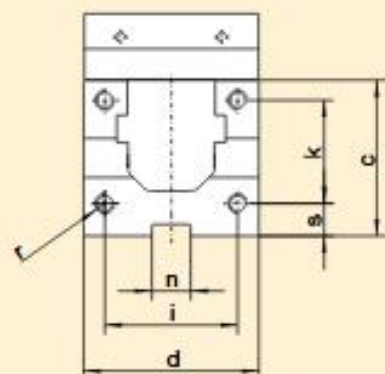
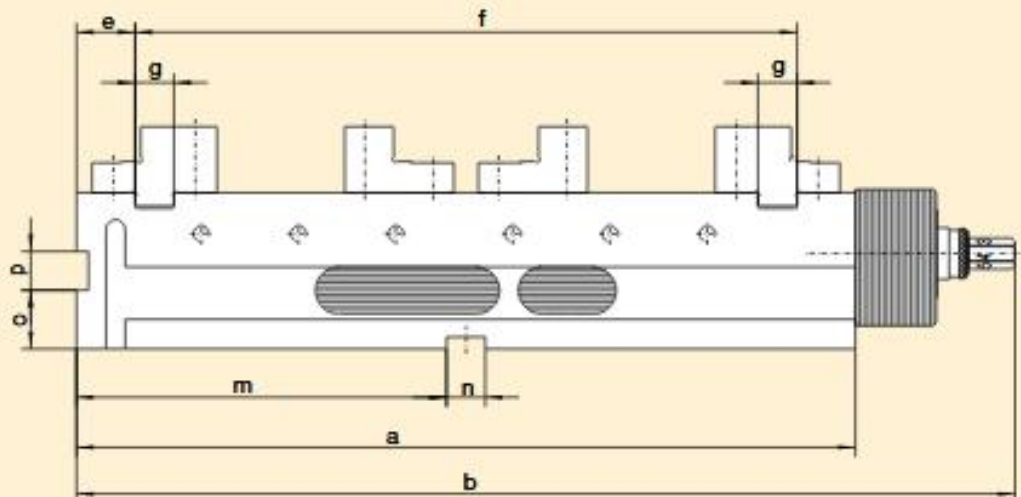
Jaw height in mm

| | | |
|-----|----|----|
| H 1 | 34 | 40 |
| H 2 | 16 | 20 |

| Step | 0 | 1 | 2 | 3 | 4 | 5 | 6 |
|--------|--------|----|----|----|----|----|----|
| Size | | | | | | | |
| 090 kN | - | 4 | 8 | 12 | 16 | 20 | 24 |
| 125 kN | direct | 10 | 20 | 30 | 40 | - | - |

Performance data

| | | | |
|--------------------------------|----|------|------|
| Jaw widths | | 90 | 125 |
| Dimensions/ Tolerance in mm | a | 400 | 530 |
| | b | 482 | 640 |
| | c | 80 | 100 |
| | d | 90 | 126 |
| | e | 30 | 43 |
| | f | 340 | 443 |
| | g | 20 | 24 |
| | i | 65 | 88 |
| | k | - | 56 |
| | m | 190 | 255 |
| | n | 20 | 20 |
| | o | 30 | 40 |
| | p | 20 | 20 |
| | r | M12 | M12 |
| | s | 40 | 19 |
| max. clamping force | kN | 24 | 40 |
| Weight | | | |
| with jaws | kg | 19,5 | 49 |
| Weight | | | |
| without jaws | kg | 15,4 | 40,5 |



GERARDI ART.865 T2X500

cod. GE 5.86.52500

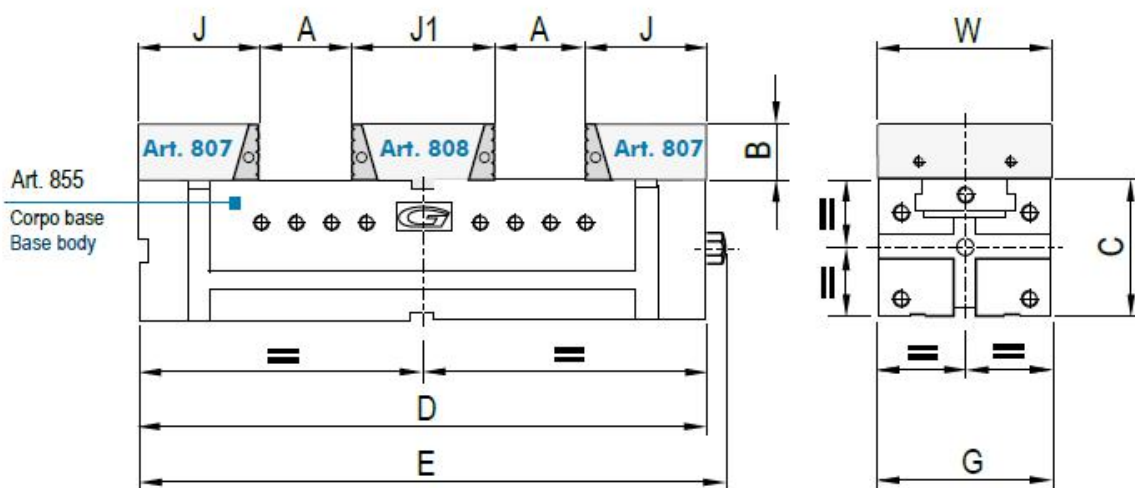
Dotazione standard:

- 2 arresti laterali Art. 370
- 1 coppia di tasselli di posizionamento precisi Art. 297
- 1 chiave a pipa Art. 375
- 1 piastrina di collegamento Art.801S



~~LISTINO € 2249~~

**PREZZO OUTLET
€ 1100**



Tipo (grandezza) morsa / Vise type (size)

kN

Apertura massima / Maximum opening

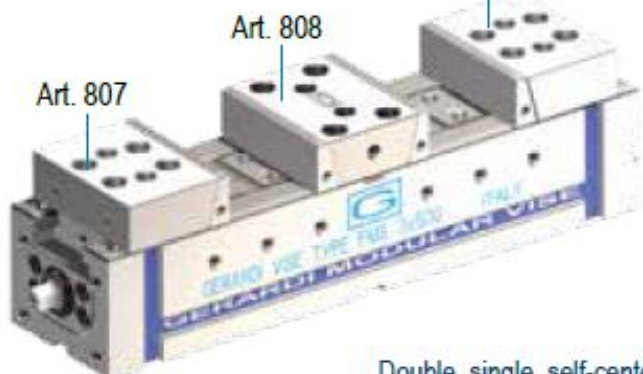
A

Art. 865

**3 MORSE IN
VISES IN 1**

Morsa FMS doppia, singola,
autocentrante con ganasce a cambio
rapido discendente (sistema a pettine)

Art. 807



Double, single, self-centering
FMS vise with quick change
pull down jaws (comb system)

2

25 kN

2 x 30

2 x 80

2 x 130

2 x 180

B

30

C

90

D

300

400

500

600

E

320

420

520

620

G

95

J

76

J1

88

W

94

kg

23

30

36

43

Cod.

5.86.52300

5.86.52400

5.86.52500

5.86.52600

HOMGE MORSA IN TIRO 160X290

cod. HOM HPAQ-160F

~~LISTINO € 2740~~

PREZZO OUTLET

€ 1500

2 PZ DISPONIBILI

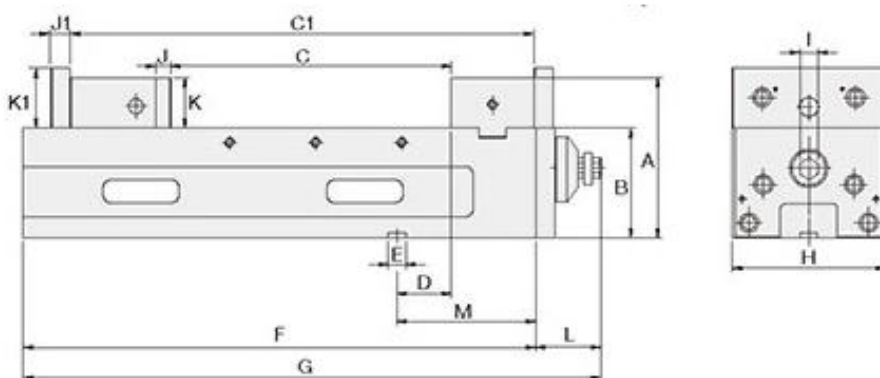


STANDARD ACCESSORIES

- 2 pcs of Alignment Wedge
- 4 pcs of Clamp
- 1 pc of Handle

OPTIONAL ACCESSORIES

- Cross Grooved Jaws
- "V" Jaws
- Combined Jaws
- Step Jaws



SPECIFICATIONS (Material: FCD 60 Ductile Iron. Hardness: HRC 50°)

Unit: mm

| MODEL | A | B | C | C1 | D | E | F | G | H |
|-----------|-----|----------|-------|---------|---------|-----|----------|---------------------|-------------|
| HPAQ-160F | 168 | 115±0.01 | 0-290 | 195-480 | 57±0.02 | 18 | 536 | 637 | 161 |
| HPAQ-200F | 187 | 120±0.01 | 0-330 | 200-550 | 66±0.02 | 18 | 616 | 715 | 201 |
| MODEL | I | J | J1 | K | K1 | L | M | Max. Clamping Force | Weight (kg) |
| HPAQ-160F | 19 | 15 | 20 | 53 | 63 | 101 | 145±0.02 | 5000 kg | 70 |
| HPAQ-200F | 19 | 18 | 24 | 66 | 75 | 99 | 168±0.02 | 6000 kg | 120 |

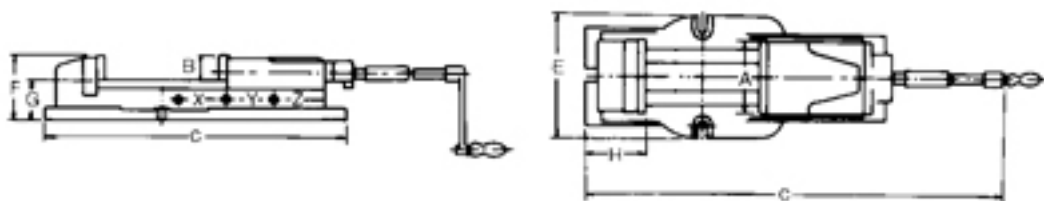
VERTEX MORSA CON BASE GIREVOLE 150X300

cod. VERT VJ600



~~LISTINO € 680~~

**PREZZO OUTLET
€ 350**

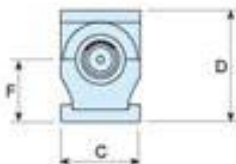
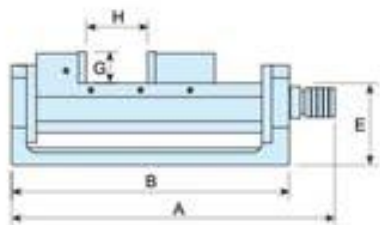


| ORDER NO. | A | B | C | D | G | H | Gross Weight | Meas.CFT | CODE NO. |
|-----------|-----|----|-----|-----|-----|-----|--------------|----------|----------|
| VJ-400 | 110 | 37 | 185 | 522 | 168 | 94 | (C)24.8 | 0.8 | 1002-050 |
| VJ-500 | 130 | 48 | 245 | 580 | 192 | 114 | (C)33.4 | 1.5 | 1002-051 |
| VJ-600 | 154 | 54 | 305 | 695 | 200 | 131 | (C)46.1 | 2.2 | 1002-052 |

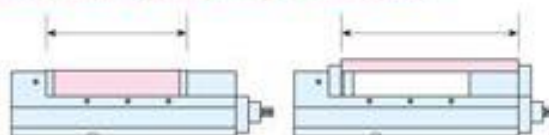
HERBERT MORSA CON BASE BASCULANTE 160X200 mm

cod. FLAM MBT.160.VJ3-3A

**ULTIMO
PZ DISPONIBILE!**

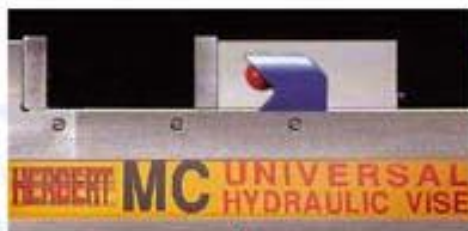


Two clamping way for choice



| MODEL | A | B | C | D | E | F | G | H | adjustable angle | N.W. | G.W. | POWER |
|---------|-----|-----|-----|-----|-----|-----|----|-----|------------------|------|------|---------|
| MBT-160 | 645 | 550 | 160 | 225 | 165 | 126 | 63 | 200 | 0°-50° | 75kg | 80kg | 5500kgf |

PATENT NUMBER
184869 201150 249761
256258
GERMANY 201125447
CHINA ZL01231630X



This unit had prevent lifting structure, when clamping in down direction power also acting, so the workpiece and movable parts lift very small, furthermore, the body and solid jaw is a combination structure, it does not tilt.

PREZZO OUTLET
€ 990

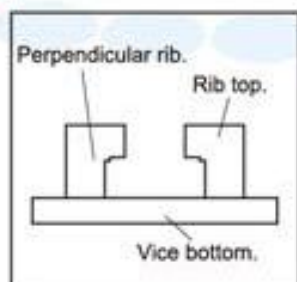
The whole Swivel Base are made by Stainless Steel, with harden treatment, durable and high accurate.

Standard Accessories

- 1.Handle-1 set
- 2.Guide key-2pcs
- 3.Screw-M6x10Lx2pcs
- 4.Chip cover
- 5.Vise locked block-4pcs

Optional Accessories

- 1.Special application jaw plates
- 2.Vise positioner
- 3.Swivel Base
- 4.Opening jaw plates
- 5.Sleeve spanner



which has great resistance to bending due to clamping to bring bend.



Ductile cast iron spring.



Microphotograph for ductile cast iron

Ductile cast iron is fit to produce rigid precision items, which have three times strength than same grade vise due to used ductile cast iron.



The common contact face and slide face of movable parts both with good wear resistance of treat treatment (over HRC45°)